
PatientOS

**PatientOS
Application
Administrator Guide**

Version 0.75

Application	Last printed 5/6/2008 11:58:00 AM
Administrator Guide	Version 0.75

Revision History

Date	Version	Description	Author
03/17/2008	0.75	Initial	Greg Caulton

Application	Last printed 5/6/2008 11:58:00 AM
Administrator Guide	Version 0.75

Contents

- 1. OVERVIEW.....3**
- 1.1 DEFAULT SETTINGS3
- 1.2 DEFINITIONS3
- 2. SYSTEM SETTINGS.....4**
- 2.1 SETTINGS TOOL4
- 2.2 CHANGING A SETTING4
- 2.3 ADDING A SETTING.....5
- 3. BATCH JOBS.....6**
- 3.1 ADDING BATCH JOBS.....6
- 3.2 SCHEDULING BATCH JOBS.....7
- 4. SYSTEM IDENTIFIERS.....8**
- 4.1 IDENTIFIER SOURCE TOOL8
- 4.2 ADDING AN IDENTIFIER SOURCE8
- 5. PATIENT PORTAL.....9**
- 5.1 LOGIN.....9

Application	Last printed 5/6/2008 11:58:00 AM
Administrator Guide	Version 0.75

2. System Settings

2.1 Settings Tool

To access the settings tool:

- Login as administrator (admin/admin is the system default username/password).
- Select the Settings link under Reference Applications.

The screen is split with settings above and the setting values for the selected setting shown below.

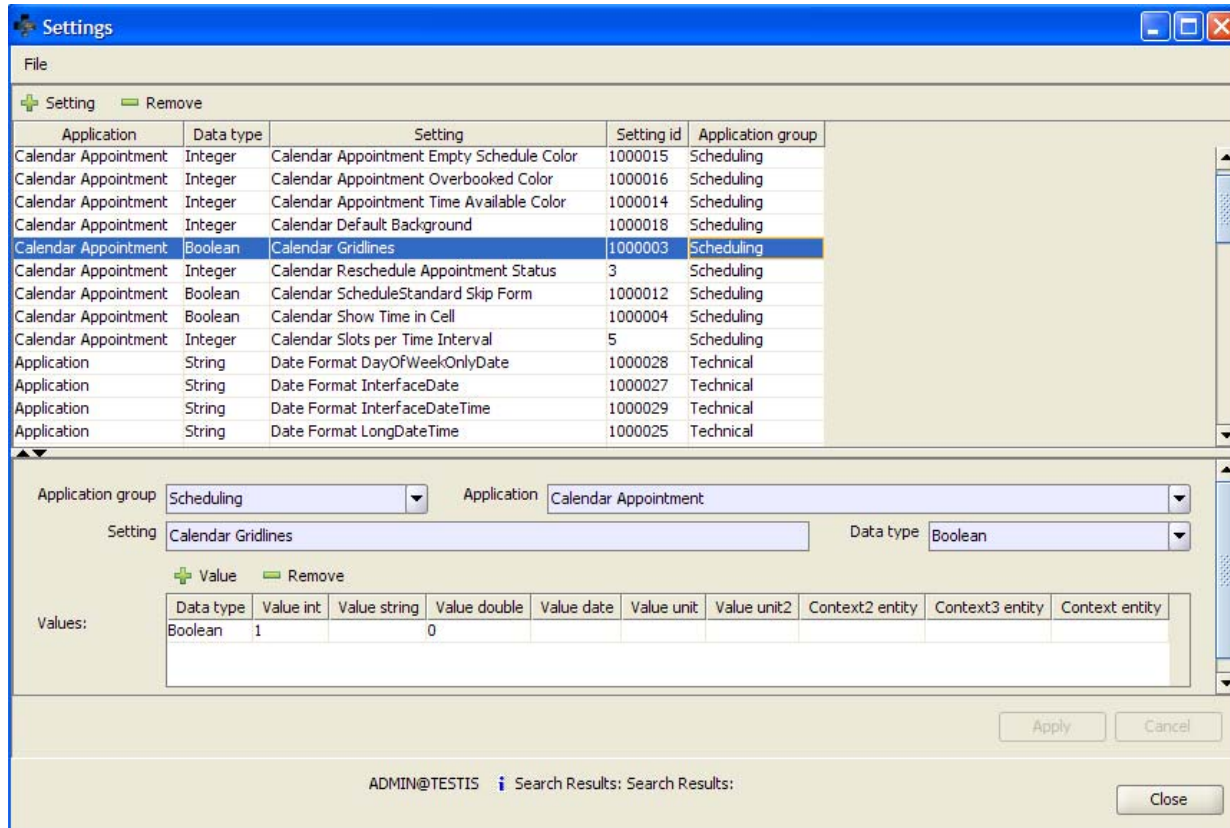


Figure 1 Settings Tool

2.2 Changing a Setting

To change a setting.

- Select a setting from the list.
- Change the value appropriate to the data type
e.g. for a Boolean setting enter 1 or 0 in the Value int field for the setting.
- Press apply to save the setting.

Application	Last printed 5/6/2008 11:58:00 AM
Administrator Guide	Version 0.75

2.3 Adding a Setting

To add a new setting. Only developers should add settings to this tool as setting names are part of the core system. Custom user defined settings will be available in later versions.

- a) Press the + Setting toolbar button
- b) Select the application group to categorize the setting.
- c) Select the application to further categorize the setting.
Note the application/app group does not impact the setting.
- d) Enter the Setting name. Code generation will update the ApplicationSettingReference.java file with the key for this setting name.
- e) Select the data type.
- f) Press + Value toolbar button
- g) The data type will default.
- h) Enter the value appropriate to the data type e.g. for a Boolean setting enter 1 or 0 in the Value int field for the setting.
- i) Repeat steps f)-h) for additional setting values.

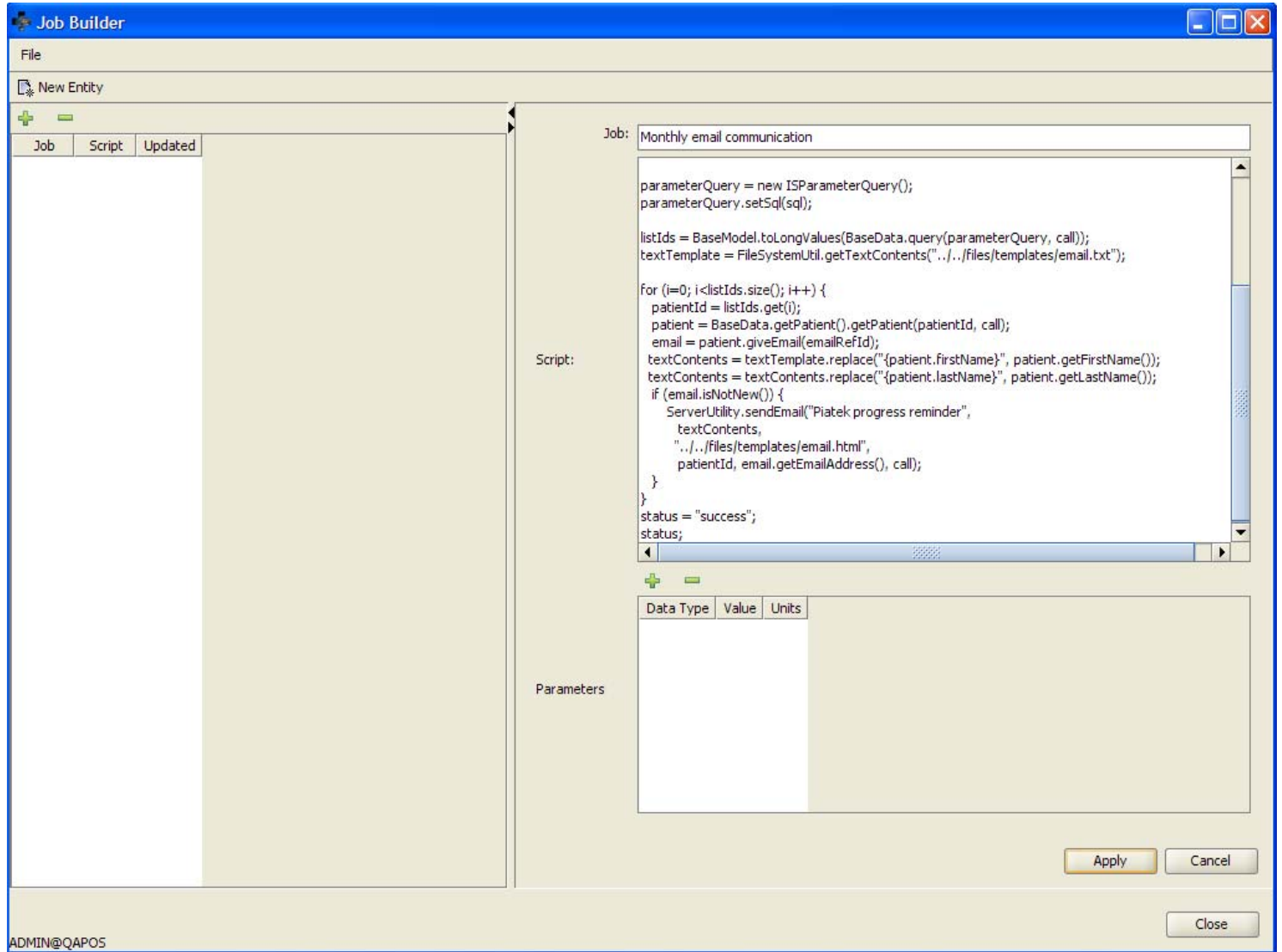
Press apply to save the setting.

Application	Last printed 5/6/2008 11:58:00 AM
Administrator Guide	Version 0.75

3. Batch Jobs

3.1 Adding Batch Jobs

Login as an administrator and select Job Builder. Enter the batch job name and script.

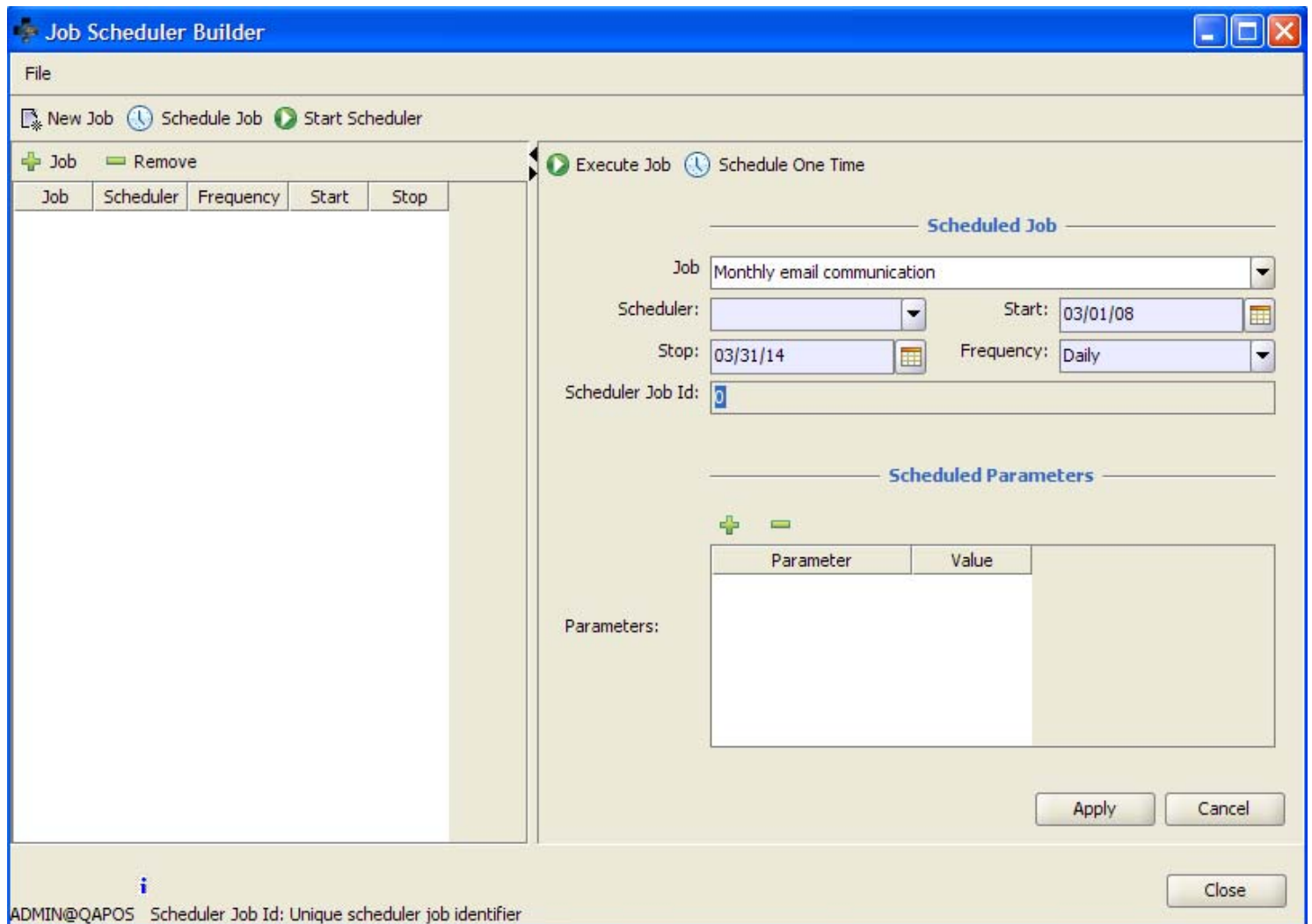


Application	Last printed 5/6/2008 11:58:00 AM
Administrator Guide	Version 0.75

3.2 Scheduling Batch Jobs

To access the Identifier Source tool:

- a) Login as administrator (admin/admin is the system default username/password).
- b) Select Job Scheduler
- c) Select the job name
- d) Scheduler is not required
- e) Start date
- f) Stop date
- g) Frequency



Application	Last printed 5/6/2008 11:58:00 AM
Administrator Guide	Version 0.75

4. System Identifiers

4.1 Identifier Source Tool

To access the Identifier Source tool:

- a) Login as administrator (admin/admin is the system default username/password).
- b) Select the Identifier Sources link under Reference Applications.

The screen is split with sources on the left and the source values for the selected source shown on the right

4.2 Adding an Identifier Source

Identifiers are added for patients as Medical Record Numbers, National Social Security numbers, as user identifiers and effectively any external database identifier for an entity.

Application	Last printed 5/6/2008 11:58:00 AM
Administrator Guide	Version 0.75

5. Patient Portal

5.1 Login

In version 0.75 the default patient login is the patients email address and last four digits of their social security number.