
PatientOS

**PatientOS
Windows Installation
Technical Guide**

Version 0.99

Windows Installation	Last printed 1/17/2010 9:41:00 PM
Technical Guide	PatientOS

Revision History

Date	Version	Description	Author
01/17/2010	0.99	Software Installation of PatientOS v0.99	PatientOS Inc.

Windows Installation	Last printed 1/17/2010 9:41:00 PM
Technical Guide	PatientOS

Contents

- 1. OVERVIEW.....3**
 - 1.1 PROCESS.....3
 - 1.2 DEFINITIONS3
- 2. SOFTWARE INSTALLATION.....4**
 - 2.1 PATIENTOS DOWNLOAD.....4
 - 2.2 PATIENTOS BASE INSTALLATION.....5
 - 2.3 POSTGRESQL INSTALLATION.....7
- 3. DATABASE INSTALLATION.....10**
 - 3.1 CREATE DATABASE10
 - 3.2 IMPORT PATIENTOS DATABASE CONTENTS.....13
- 4. SYSTEM STARTUP14**
 - 4.1 INSTALLATION14
 - 4.2 APPLICATION SERVER.....14
- 5. CLIENT STARTUP15**
 - 5.2 LOGIN.....16

Windows Installation	Last printed 1/17/2010 9:41:00 PM
Technical Guide	PatientOS

Windows Installation Technical Guide

1. Overview

1.1 Process

The basic steps to installing PatientOS are divided into the backend system and front end client

a) Backend System

- a. Install the PatientOS software base version.
- b. Install the PatientOS updater software.
- c. Install and create a PostgreSQL database version 8.2 or higher.
- d. Import the PatientOS database contents.
- e. Start the PatientOS application server.

b) Frontend Client

- a. Install the PatientOS software.
- b. Install the latest software updates.
- c. Start the PatientOS client.

1.2 Definitions

POS	Refers to the PatientOS software as a system.
Java	Programming language developed by Sun
PostgreSQL	An Open Source (free) database server, an alternative Oracle, SQLServer, etc.
Application Server	The 'backend' J2EE server which clients connect to.
Client	The rich (fat) client graphic user interface (GUI) with which the users interact.

Windows Installation	Last printed 1/17/2010 9:41:00 PM
Technical Guide	PatientOS

2. Software Installation

2.1 PatientOS Download

2.1.1 Windows

The PatientOS download is hosted at Sourceforge. Here is the direct URL

Windows Base Install

<http://downloads.sourceforge.net/patientos/PatientOS-0.99-Setup.exe>

PostgreSQL Database Server Software

<http://downloads.sourceforge.net/patientos/postgresql-8.3.7-1-windows.exe>

PatientOS Demo or Production Database Contents

<http://downloads.sourceforge.net/patientos/demo-099-database.zip>

<http://downloads.sourceforge.net/patientos/production-099-database.zip>

<http://downloads.sourceforge.net/patientos/patientos-099-datafiles.zip>

Links from the website redirect to sourceforge where it is often difficult to find the download link – look for the text “use this direct link” circled in red below.

Address http://sourceforge.net/project/downloading.php?groupname=patientos&filename=patientos-081-setup.tar.gz&use_mirror=osdn Go

Google G Go 38 blocked Check AutoLink Settings

To help protect your security, Internet Explorer blocked this site from downloading files to your computer. Click here for options...

SOURCEFORGE.NET®

Open Source Software - You are downloading PatientOS ...

Problems with the download please use this direct link or try another mirror.

[Share this project](#) [Related SourceForge](#) [Forums](#)

Windows Installation	Last printed 1/17/2010 9:41:00 PM
Technical Guide	PatientOS

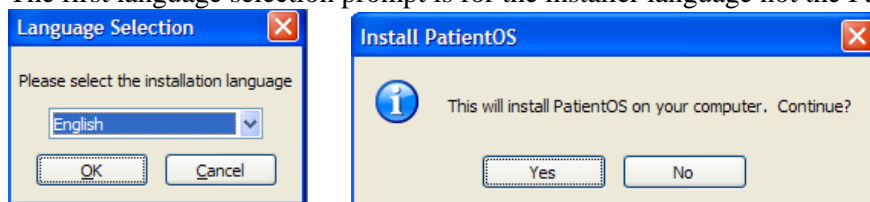
2.2 PatientOS Base Installation

2.2.1 Installer

Run the downloaded setup executable PatientOS-0.99-Setup.exe and follow the prompts

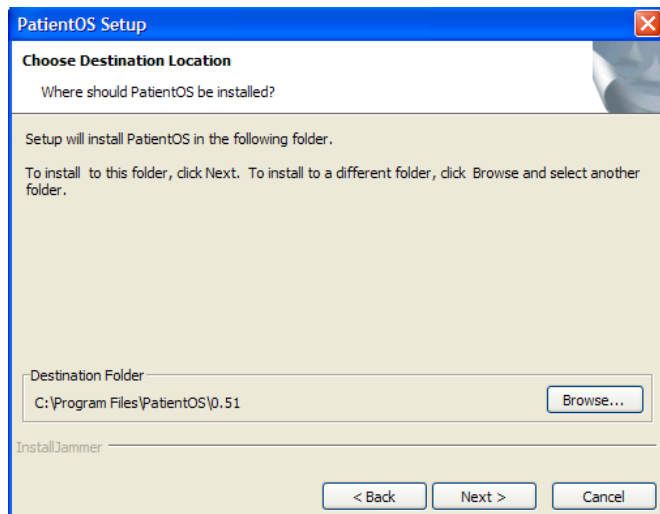
a) Installer Language Selection

The first language selection prompt is for the installer language not the PatientOS language.



b) Destination Directory

The destination directory defaults to Program Files. The directory's disk should reserve at least 750MB space for the installation. A client only install will require less space, the server will grow significantly larger.



Windows Installation	Last printed 1/17/2010 9:41:00 PM
Technical Guide	PatientOS

The target directory defaults to 0.99. It would be recommended to install into a version agnostic directory such as

C:\Program Files\PatientOS\demo

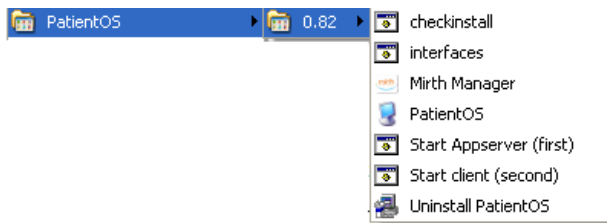
or

C:\Program Files\PatientOS\production

However for the rest of the document we will assume the path installed as C:\Program Files\PatientOS\0.99

c) Start → Programs

By default the software shortcuts will be stored in Start → Programs → PatientOS → 0.99



Windows Installation	Last printed 1/17/2010 9:41:00 PM
Technical Guide	PatientOS

2.3 PostgreSQL Installation

2.3.1 Installer

Run the downloaded PostgreSQL installer postgresql-8.3.7-1-windows.exe

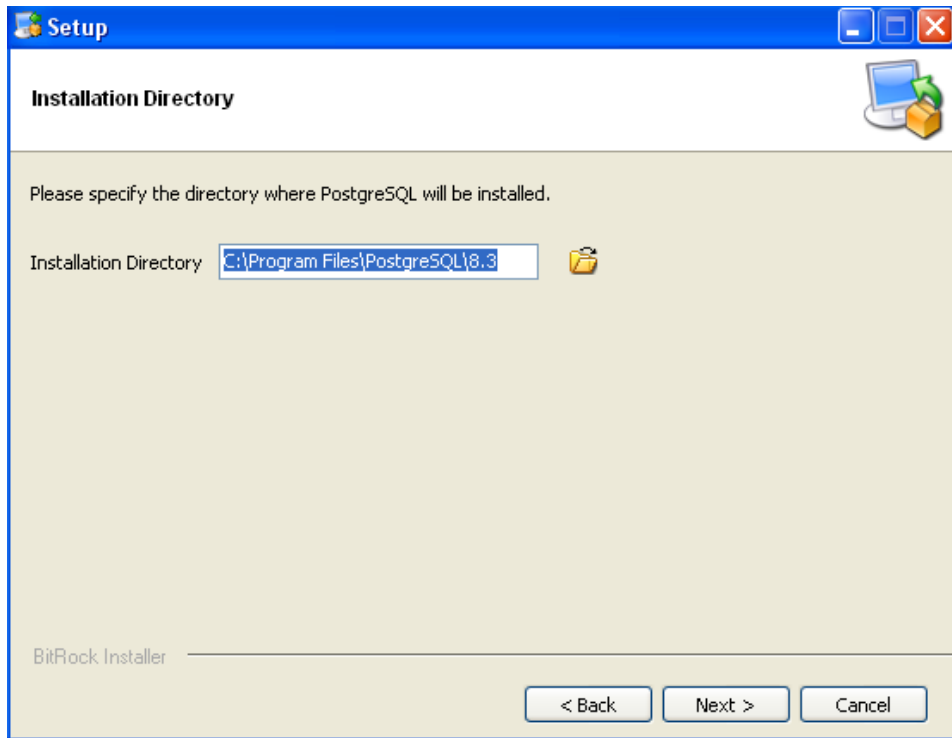


Figure 1 Default directory install

Accept the default directory to install PatientOS into.

Windows Installation	Last printed 1/17/2010 9:41:00 PM
Technical Guide	PatientOS

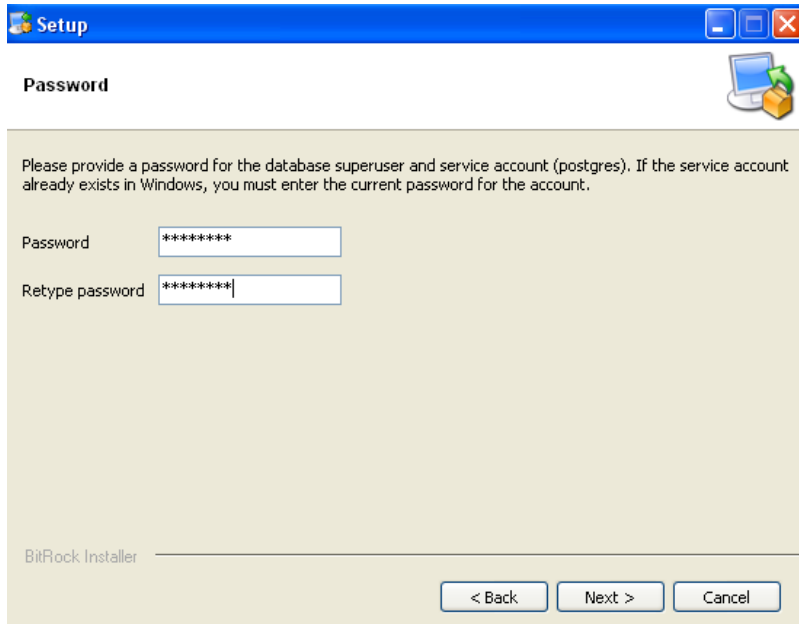


Figure 2 postgres password

The super user password is **critical** to remember or write down – it is required to administer the databases.

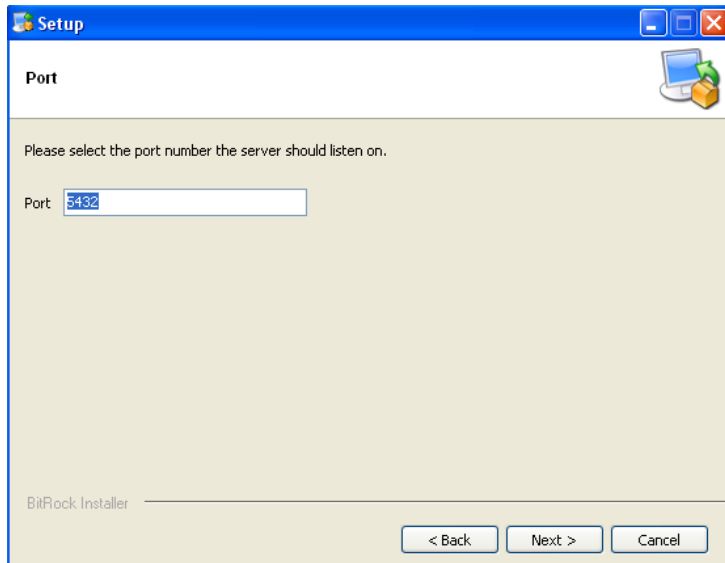


Figure 3 Database port 5432

Use the default port 5432.

Windows Installation	Last printed 1/17/2010 9:41:00 PM
Technical Guide	PatientOS

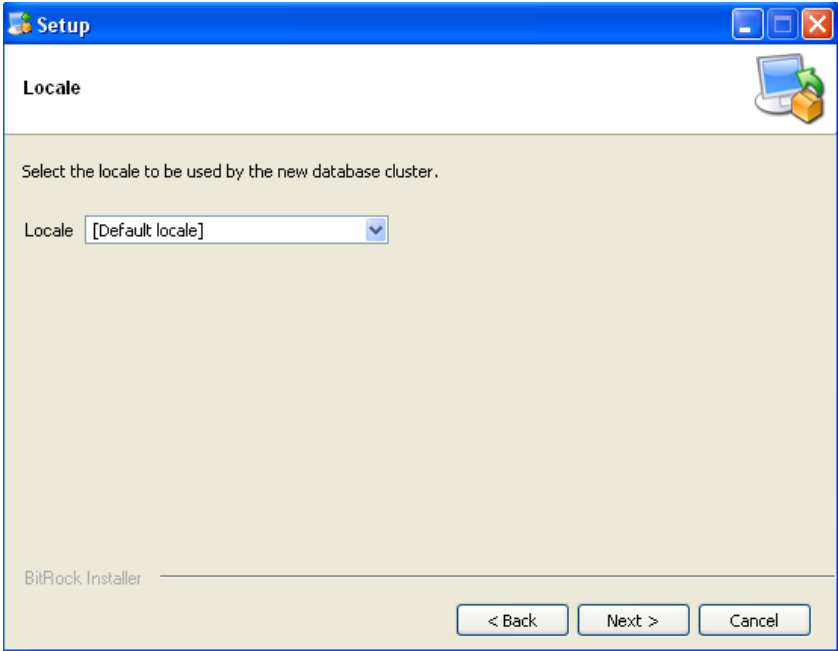


Figure 4 Locale

Use the default locale.

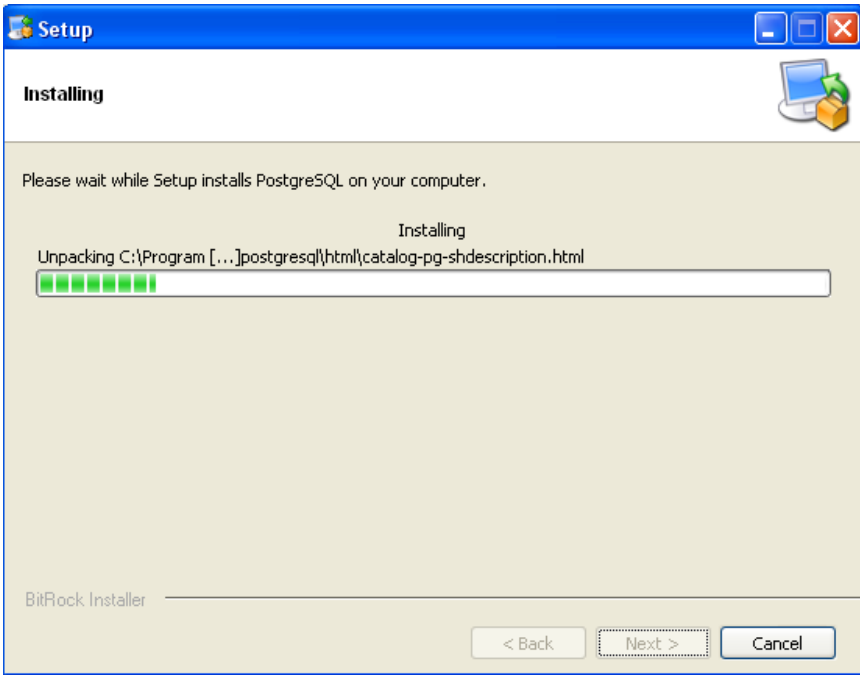


Figure 5 Install

Press next and finish to install the database software.

Windows Installation	Last printed 1/17/2010 9:41:00 PM
Technical Guide	PatientOS

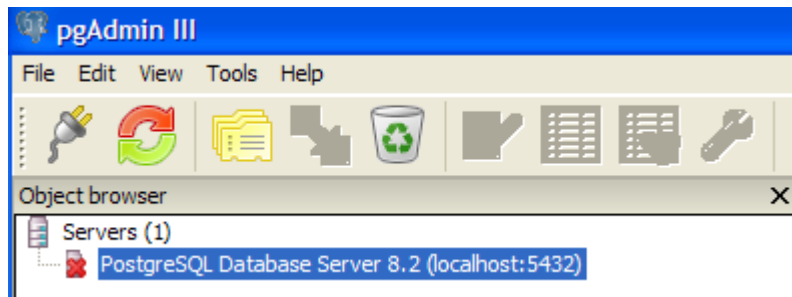
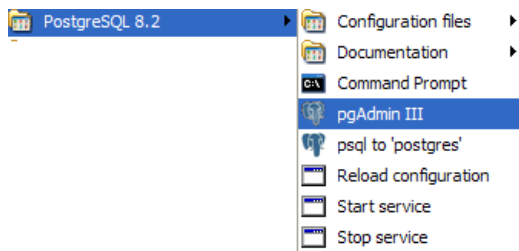
3. Database Installation

3.1 Create Database

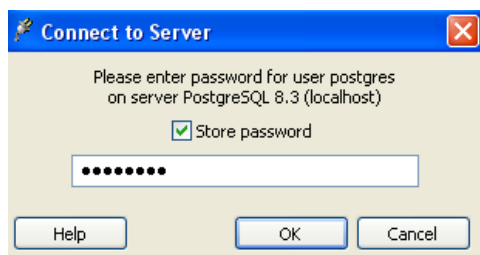
Before the PatientOS can start properly a database is needed with a username and password the application server can connect to. There also needs to be PatientOS specific contents in the database.

3.1.1 PGAdminIII

The PostgreSQL installation also installs a graphic tool to manage the PostgreSQL databases. Use Start → Programs → PostgreSQL → pgAdmin III to start the tool.



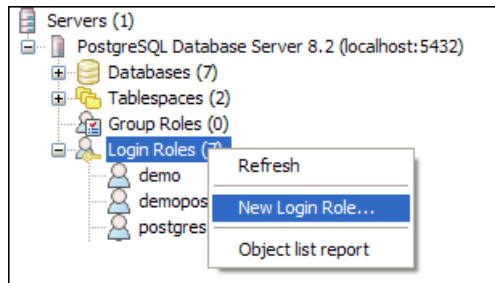
Double click on the single line PostgreSQL Database Server to connect to the database. You will be prompted for the postgres password entered during the PostgreSQL installation.



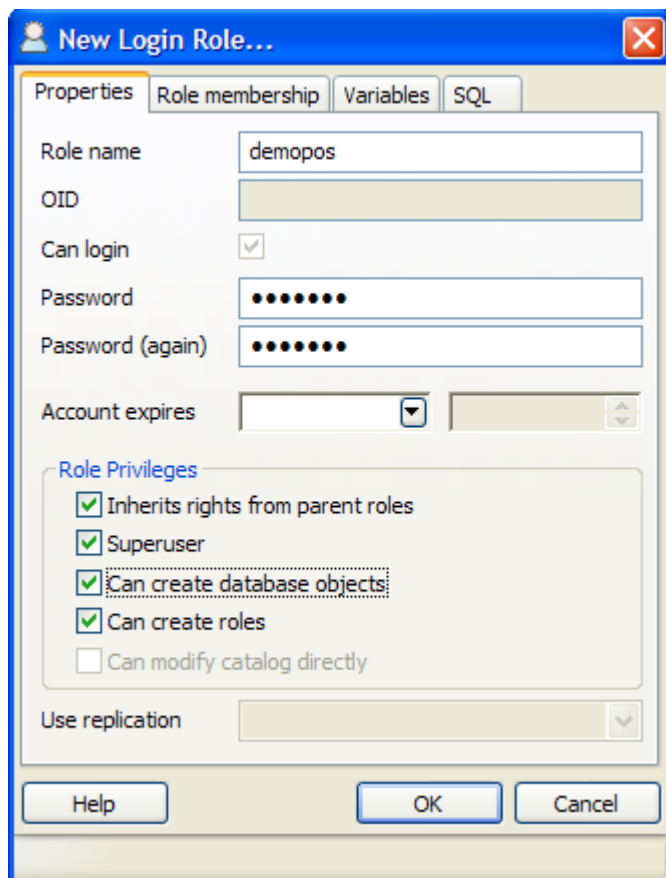
Windows Installation	Last printed 1/17/2010 9:41:00 PM
Technical Guide	PatientOS

3.1.2 Create Database Login

Select Login Roles and right click and choose New Login Role.



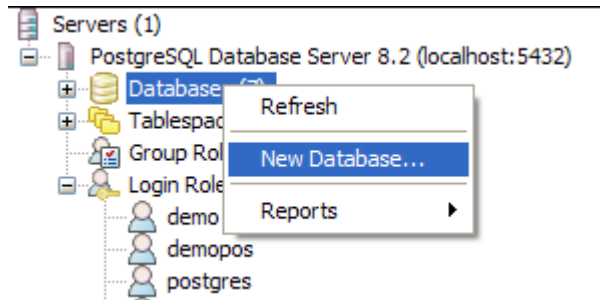
Enter demopos for the username, password and **check off all the privileges**.



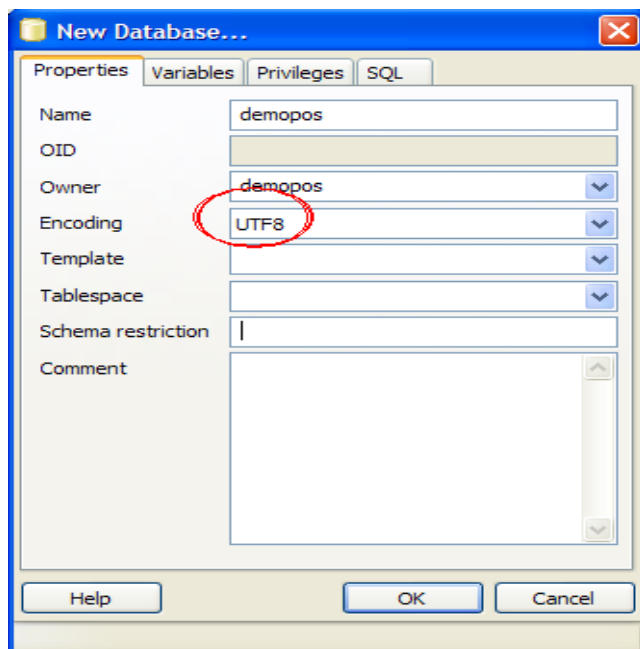
Windows Installation	Last printed 1/17/2010 9:41:00 PM
Technical Guide	PatientOS

3.1.3 Create Database

Select Databases and right click and choose New Database.



Enter demopos for the database name and user name.



The encoding will need to match the encoding selected for the installation.

If you have an **old installation** need to drop the existing database. Stop the application server and execute the following commands.

```
cd C:\progra~1\patientos\0.99\server\database
C:\progra~1\postgresql\8.3\bin\psql -U demopos demopos
drop schema public cascade;
create schema public;
\q
```

Windows Installation	Last printed 1/17/2010 9:41:00 PM
Technical Guide	PatientOS

3.2 Import PatientOS Database Contents

Load the Demo Database

3.2.1 Import PatientOS Starter Database and Files

The demo database has binary files that are database specific.

Download and unzip the corresponding database files and database contents

<http://downloads.sourceforge.net/patientos/patientos-099-datafiles.zip>

Unzip and overlay the files in the data directory
C:\progra~1\patientos\0.99\server\data

<http://downloads.sourceforge.net/patientos/starter-099-database.zip>

Start→Run→cmd

cd desktop

```
C:\progra~1\postgresql\8.3\bin\psql -U demopos demopos < starter-099-database.sql
```

See forum for information on renaming the demo facility to a facility of your choice.

Windows Installation	Last printed 1/17/2010 9:41:00 PM
Technical Guide	PatientOS

4. System Startup

4.1 Installation

It is assumed that the Windows, Linux or other Installation Guide has been followed and that you have

- a) PostgreSQL database installed
- b) Import PatientOS database contents
- c) Installed the application server software
- d) Installed the client software

4.2 Application Server

The application server is JBoss version 4.2.0 GA with the PatientOS specific libraries and configuration files. The application server is required to be running before the client can start. The application server can run on the same server as the client.

4.2.1 Appserver shell script

The windows installation creates a script appserver.bat with a shortcut in

Start → Programs → PatientOS → <version> → Start Application Server (first)

The working directory must be the same as the script. Start the application server.

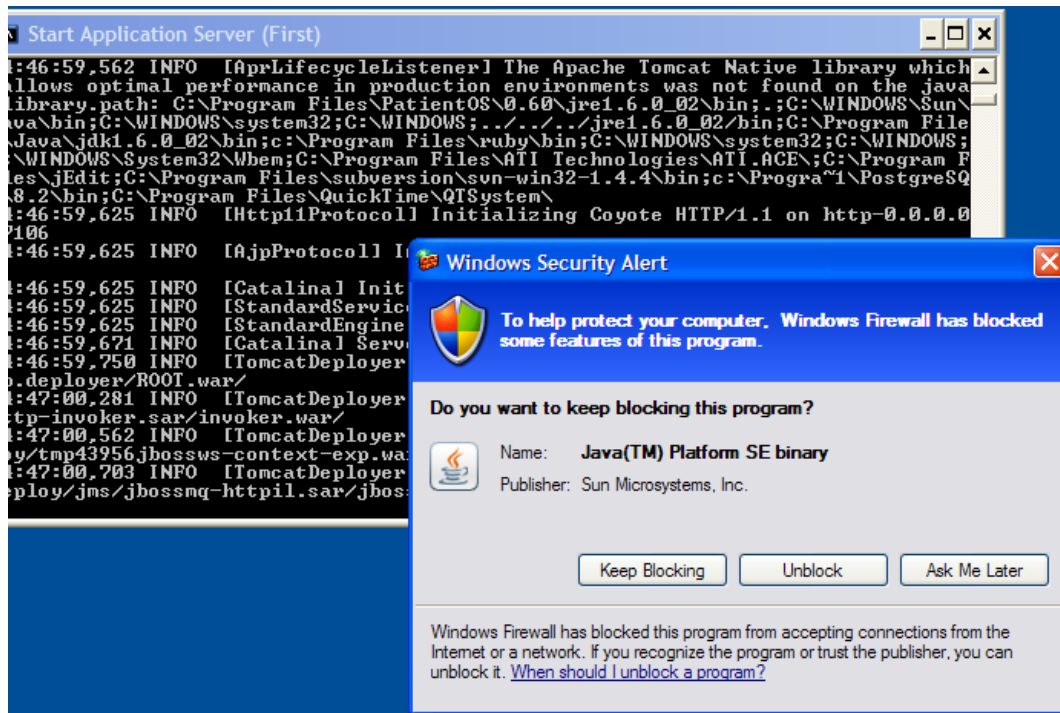
For a successful installation the last line printed to the shell is **Instances Found 0**

4.2.2 Service

The application server runs perpetually and in a production setting should be configured as a service. The application server takes 20 seconds to start on a 2 ghz processor. Once started the server typically only needs to be restarted for upgrades.

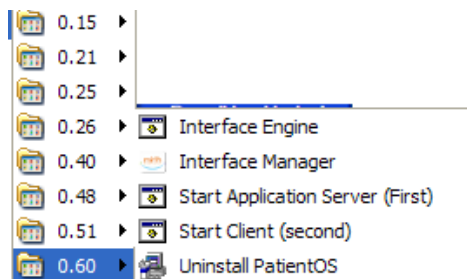
Windows Installation	Last printed 1/17/2010 9:41:00 PM
Technical Guide	PatientOS

On windows this is the first time the server has been installed you may need to press Unblock for this dialog:



5. Client Startup

The client can run on the same server as the application server by default. To have the client connect to an application server running on a remote host edit the shell server patientos.bat



On windows right click on the shortcut called Start Client (second) and select Edit. This should open an editor where you can change the script.

On linux

```
cd <path to directory>/patientos/0.99/client/bin
vi patientos.sh
```

Windows Installation	Last printed 1/17/2010 9:41:00 PM
Technical Guide	PatientOS

5.1.1 Client shell script

To connect to a remote host change localhost to the hostname or IP address of the server running the application server.

```

patientos.bat - Notepad
File Edit Format View Help
set JAVA_HOME=..\..\jre1.6.0_02
set PATH=..\..\jre1.6.0_02\bin;%PATH%
start javaw -splash:plash.gif -Djava.naming.factory.initial=org.jnp.interfaces.NamingContextFactory -Djava.naming.factory.url.pkgs=org.jboss.naming:org.jnp.interfaces
-Djava.naming.provider.url=localhost:7107 -Xms64m -Xmx512m -Xverify:none -cp
..\lib\patientis.jar;..\lib\deby.jar;..\lib\microba-0.4.4.jar;..\lib\binding-1.1.1.jar;..\lib\forms-1.0.7.jar;..\lib\validation-1.3.0.jar;..\lib\looks-2.0.1.jar;..\lib\jboss\log4j
.jar;..\lib\substance.jar;..\lib\commons-codec-1.3.jar;..\lib\rules\commons-io-1.1.jar;..\lib\dom4j.jar;..\lib\emma.jar;..\lib\itext-2.0.4.jar;..\lib\jasperreports-1.3.1.jar;..\lib\j
s.jar;..\lib\junit-4.1.jar;..\lib\layer.jar;..\lib\mysql-connector-java-3.1.11-bin.jar;..\lib\oscache-2.3.2.jar;..\lib\pircbot.jar;..\lib\postgresql-8.1-407.jdbc3.jar;..\lib\quartz-
all-1.6.0.jar;..\lib\resources.jar;..\lib\swing-layout-1.0.1.jar;..\lib\swingx.jar;..\lib\jboss\concurrent.jar;..\lib\jboss\hibernates.jar;..\lib\jboss\hibernate-annotations.jar;..\
lib\jboss\hibernate-entitymanager.jar;..\lib\jboss\jbossall-client.jar;..\lib\jboss\jboss-annotations-ejb3.jar;..\lib\jboss\jboss-ejb3.jar;..\lib\jboss\jnpserver.jar;..\lib\jboss\m
ail.jar;..\lib\rules\drools-ant-4.0.1.jar;..\lib\rules\drools-compiler-4.0.1.jar;..\lib\rules\drools-core-4.0.1.jar;..\lib\rules\drools-decisiontables-4.0.1.jar;..\lib\rules\drools-
jsr94-4.0.1.jar;..\lib\rules\commons-jci-core-1.0.jar;..\lib\rules\commons-jci-eclipse-1.0.jar;..\lib\rules\commons-jci-janino-1.0.jar;..\lib\rules\antlr-runtime-3.0.jar;..\lib\rule
s\ant-nodeps-1.6.5.jar;..\lib\rules\janino-2.5.7.jar;..\lib\rules\mvel14-1.2rc4rv908.jar;..\lib\ostermillerutils_1_07_00.jar;..\lib\velocity-tools-view-2.0-beta1.jar;..\lib\commons-
collections-3.2.jar;..\lib\oro-2.0.8.jar;..\lib\velocity-1.5.jar;..\lib\velocity-tools-2.0-beta1.jar;..\lib\velocity-tools-generic-2.0-beta1.jar;..\lib\args4j-2.0.8.jar
com.patientis.client.security.Login.LoginController

```

5.2 Login

Login to the client with

- demo/demo to access the system as a privileged physician
- admin/admin to access the system as an administrator